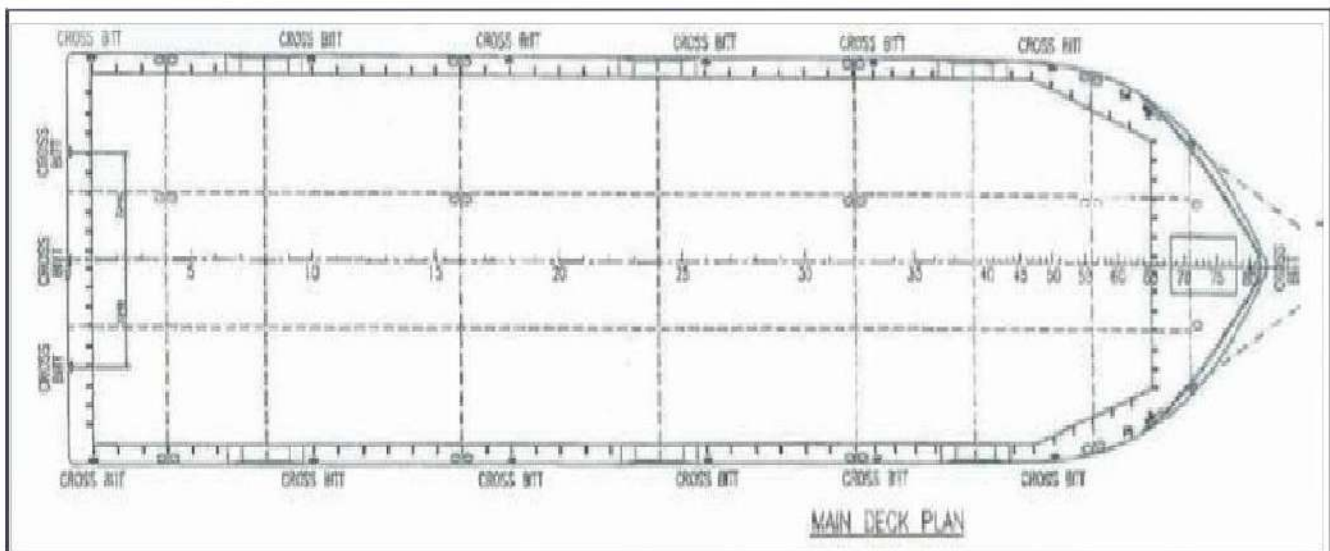


# Macrock 4

## 12,500 DWT Deck Cargo Barge

General Information		Principal Dimensions		Mooring Details	
Vessel Name	Macrock 4	Length Overall	106.8 m	Anchor Type	Stockless
Type of Hull	Steel	Length BP	111.25 m	Anchor Weight	2.2 Tons
PortofRegistry	Basseterre	BreadthMould	28.04 m	AnchorWire	250m x 38m
Flag	SKN	DepthMoulded	6.93 m	MooringBollards	10 units
Class	BV	Displacement	14,369.2 T		
Year of Built	2007	DeckLoading	14,000 Tons		
		Sidewall Height	1.5m		



Particulars given herein are entirely without warranty as to correctness and interested parties must satisfy themselves by inspection or other means of the details of the vessel or vessel referred to.

### Marine Core & Charter LLC

Baysquare-01, Building number BB01

Unit 1001, Business Bay

Dubai, UAE

P.O. Box No.: 117241 Dubai UAE / Tel: +9714-4538338 / Fax: +9714-4537943

Email: [info@marinec2.com](mailto:info@marinec2.com) / website: [www.marinec2.com](http://www.marinec2.com)