

# MEDROCK 2

## 8,897 DWT Ballastable Barge

### General Information

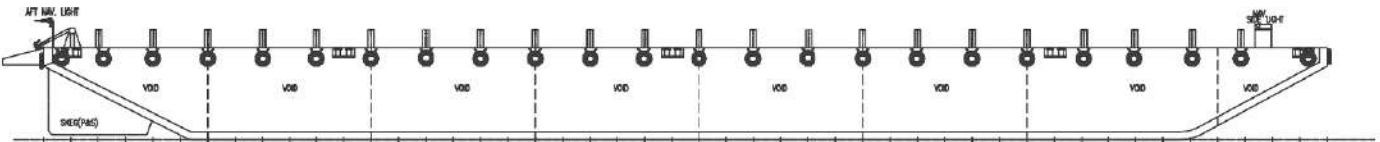
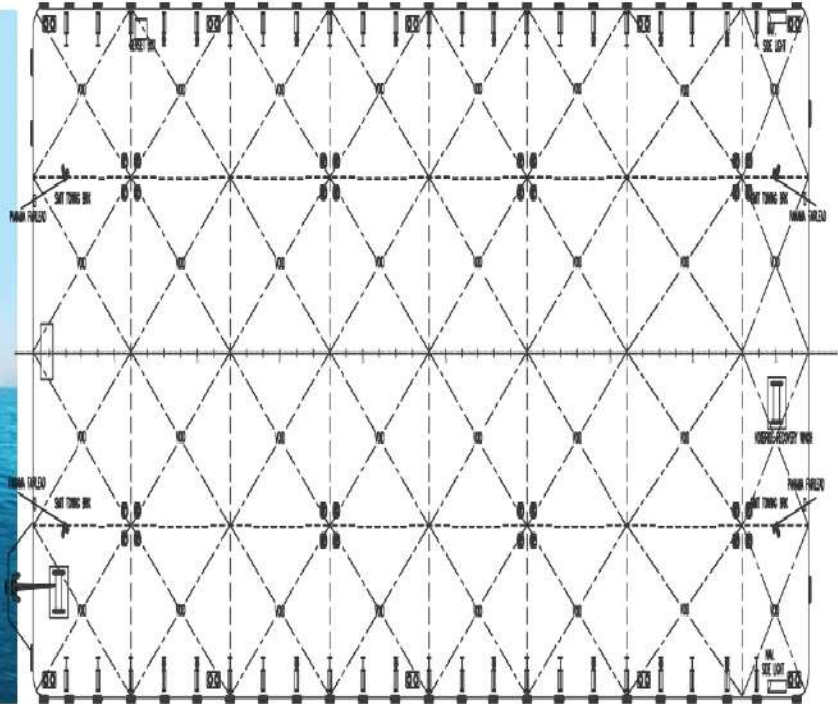
Vessel Name	MEDROCK 2
Type	Ballastable Barge
Flag	SKN
Year Built	2007
Class	ABS
GRT / NRT	3662 / 1098

### Principal Dimensions

Length Overall	85.95m
Breadth Moulded	27.42m
Depth Moulded	6.1m
Dead Weight	8897.5 Tons
Deck Load	15T/m <sup>2</sup>

### Mooring Details

Anchor Type	Stockless
Anchor Weight	1.5 Tons
Anchor Wire	60m x 16mm
Mooring Bollards	10 Units



Particulars given herein are entirely without warranty as to correctness and interested parties must satisfy themselves by inspection or other means of the details of the vessel or vessel referred to.

### Marine Core & Charter LLC

Baysquare-01, Building number BB01  
Unit 1001, Business Bay  
Dubai, UAE

P.O. Box No.: 117241 Dubai UAE / Tel: +9714-4538338 / Fax: +9714-4537943  
Email: [info@marinec2.com](mailto:info@marinec2.com) / website: [www.marinec2.com](http://www.marinec2.com)