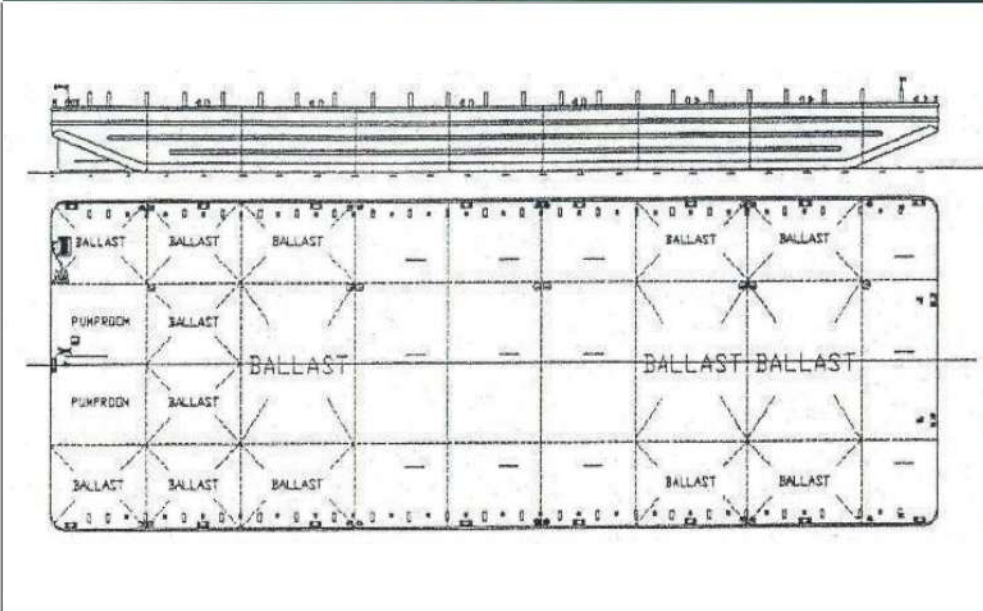


MEDROCK 6

8,000 DWT Deck Cargo Barge



General Information		Principal Dimensions		Mooring Details	
Vessel Name	MEDROCK 6	Length Overall	86m	Anchor Type	Stockless
Year Built	1995	Breadth Moulded	27.50m	Anchor Winch	Y
Type	Deck Cargo Barge	Depth Moulded	5.5m	Smit Towing Brackets	Y
Flag	SKN	Max. Draft	4.45m	Mooring Bollards	16 units
Port of Registry	Basseterre	Displacement	9630t		
Official No.	SKN 1003548	Deadweight	8000t	NOTE: The barge can be fitted with spudlegs, side walls, ramp & moorings by request.	
Class	IROS	Lightship	1550t		
Class No.	64885	Deck Area Approx.	2200 m2		
GRT / NRT	3385/1015	Deck Strength	10 T/m2		
		Sidewall Height	1.5m		



Particulars given herein are entirely without warranty as to correctness and interested parties must satisfy themselves by inspection or other means of the details of the vessel or vessel referred to.

Marine Core & Charter LLC

Baysquare-01, Building number BB01
 Unit 1001, Business Bay
 Dubai, UAE
 P.O. Box No.: 117241 Dubai UAE / Tel: +9714-4538338 / Fax: +9714-4537943
 Email: info@marinec2.com / website: www.marinec2.com